

PRINT PACK GROUP

Dlaczego WŁAŚNIE MY?

- Pracujemy 7 dni w tygodniu.
- Dbamy o jakość, kontrolujemy każdy etap produkcji.
- Dysponujemy nowoczesnym parkiem maszynowym.
- Stawiamy na dobre relacje.
- Szybko reagujemy na potrzeby Klientów.
- Zapewniamy atrakcyjne ceny
- Wywiązujemy się z zadeklarowanych terminów realizacji.

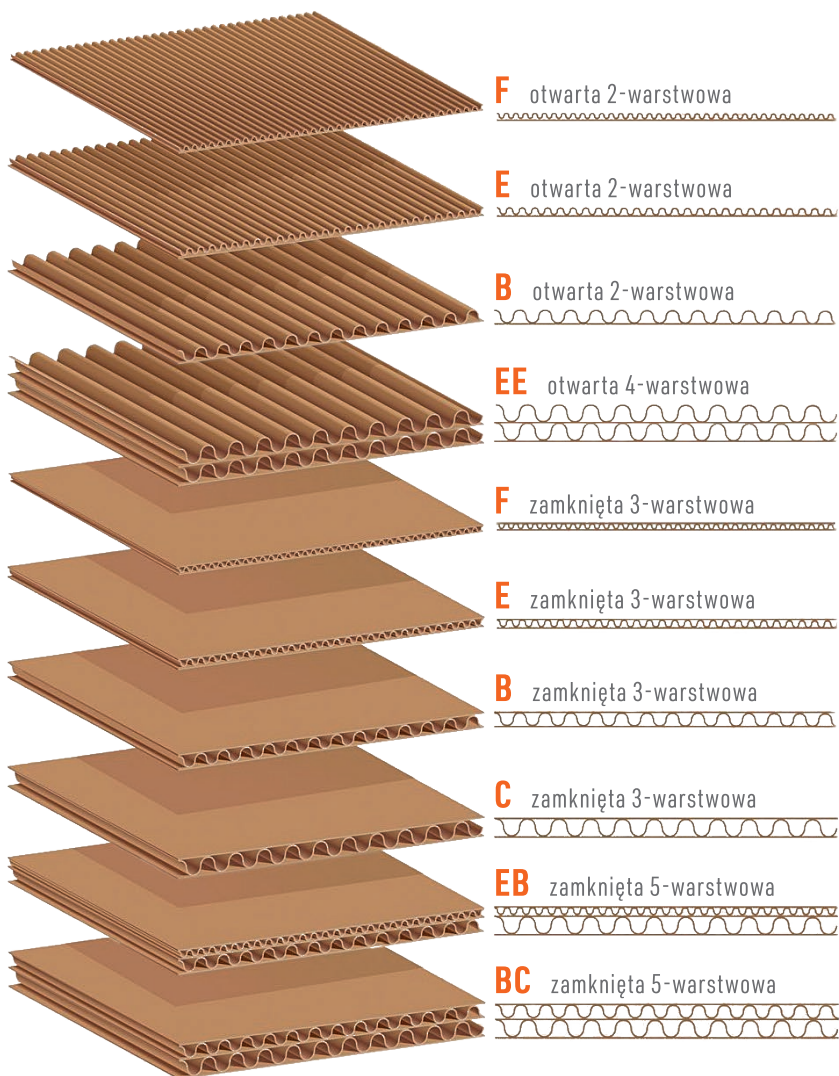


KATALOG FEFCO

SPIS TREŚCI

▲ Typ 0100 (rolki i arkusze stosowane w handlu)	4
▲ Typ 0200 (pudełka klapowe)	5
▲ Typ 0300 (pudełka teleskopowe)	12
▲ Typ 0400 (pudełka składane i tace)	18
▲ Typ 0500 (pudełka wsuwane)	33
▲ Typ 0600 (pudełka trwale łączone)	36
▲ Typ 0700 (pudełka klejone jednoczęściowe)	39
▲ Typ 0900 (wyposażenie wewnętrzne)	45

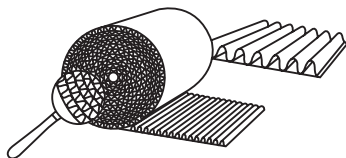
TYPY TEKSTUR



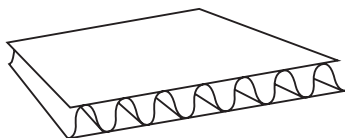
0100

▲ Rolki i arkusze stosowane w handlu

0100



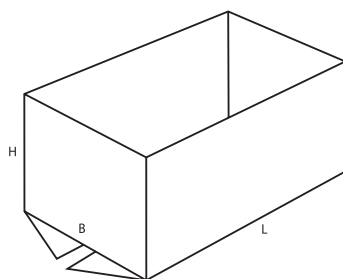
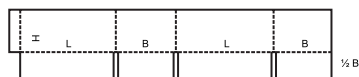
0110



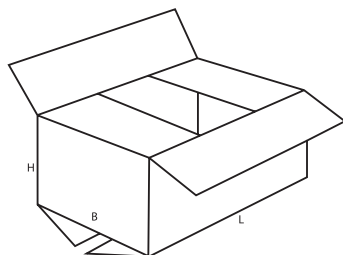
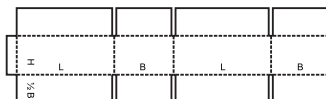
0200

- ▲ **Pudła klapowe** są to pudełka złożone zasadniczo z jednej części, których brzeg jest klejony, szyty, albo które mają połączenie taśmą klejącą oraz posiadają górne i dolne kłapy. Producent wysyła je złożone na płask, gotowe do użycia, a zamyka przy zastosowaniu kłap.

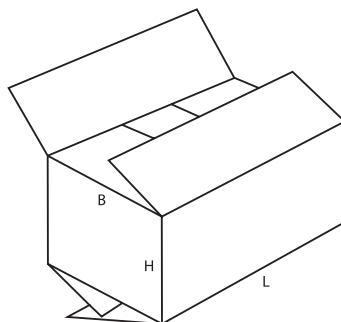
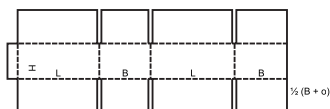
0200



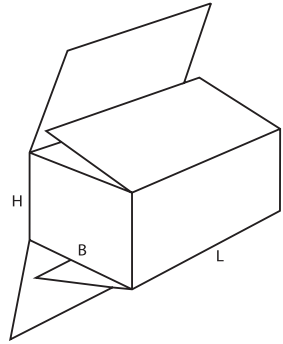
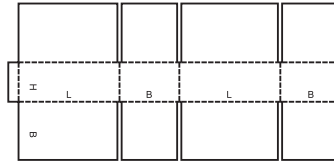
0201



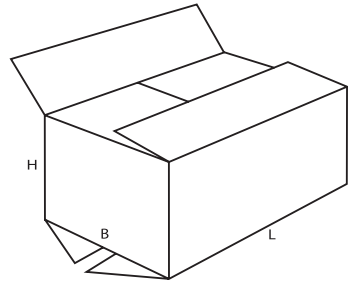
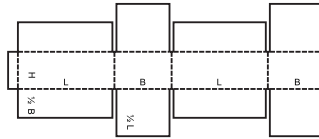
0202



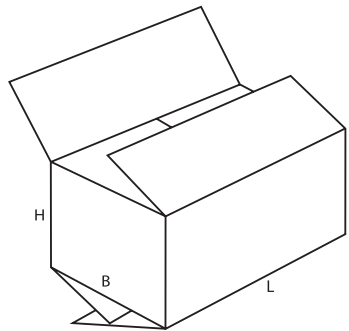
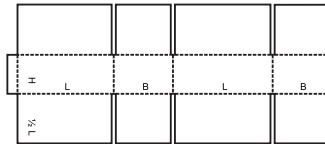
0203



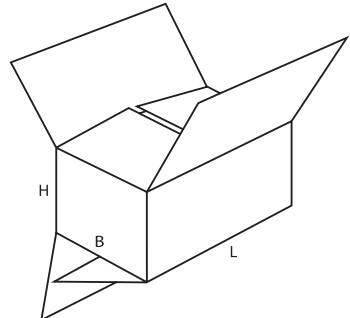
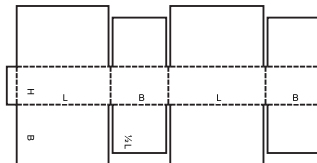
0204



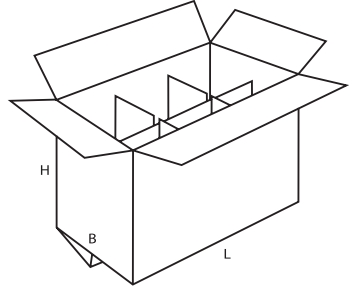
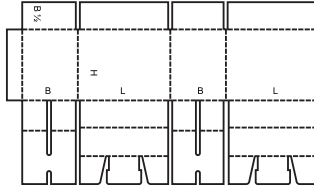
0205



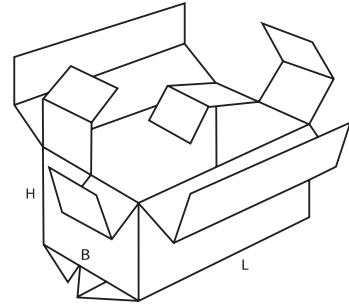
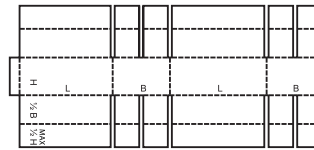
0206



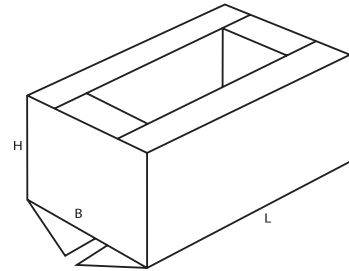
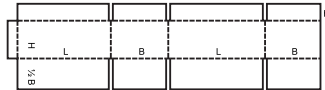
0207



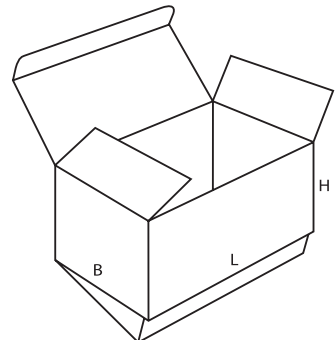
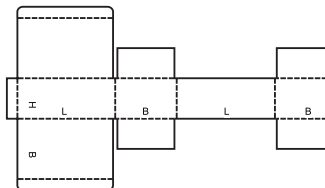
0208



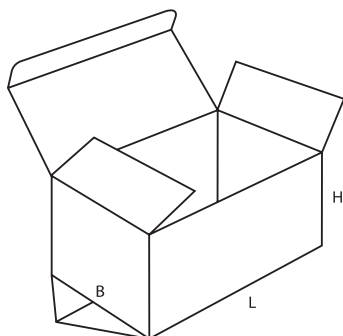
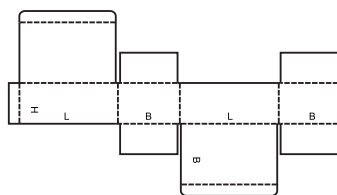
0209



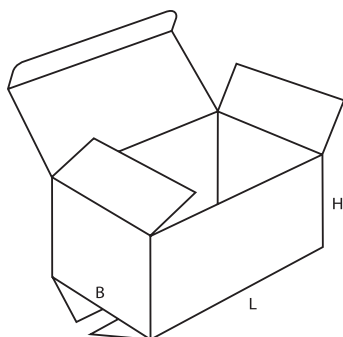
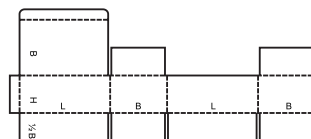
0210



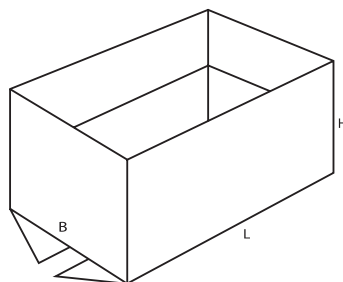
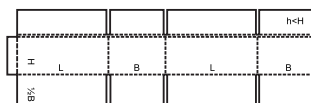
0211



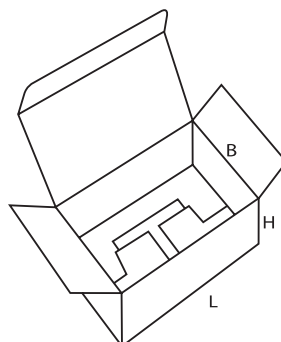
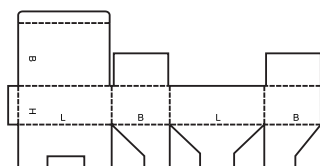
0212



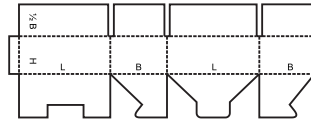
0214



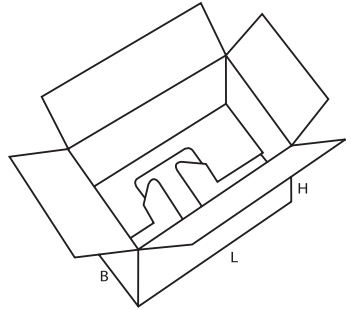
0215



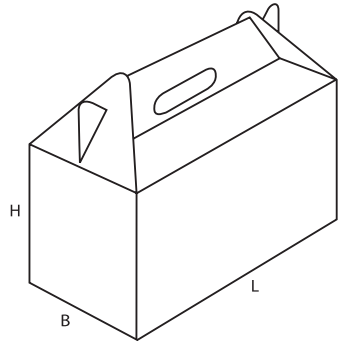
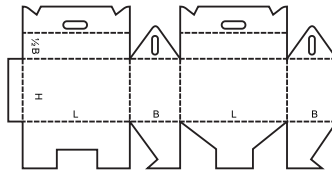
0216



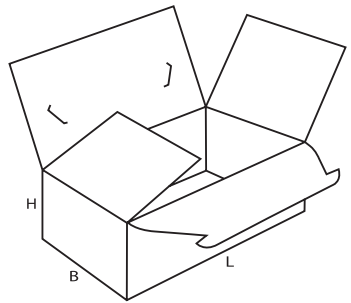
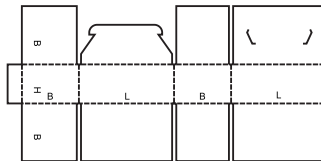
closure of top can be automated



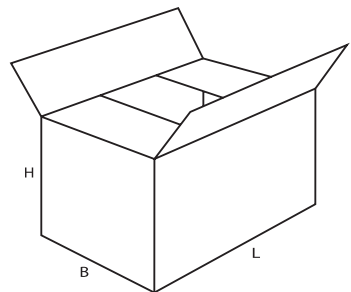
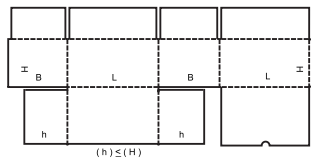
0217



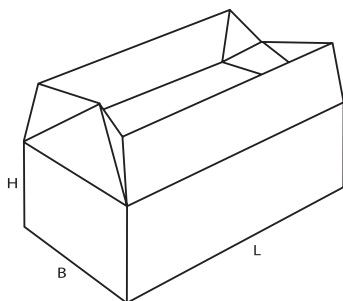
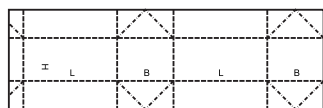
0218



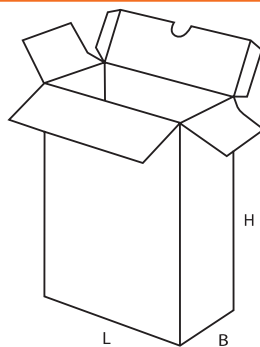
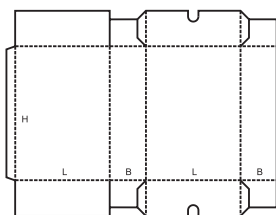
0225



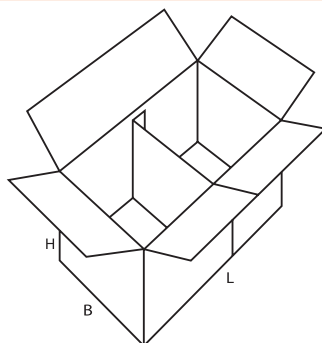
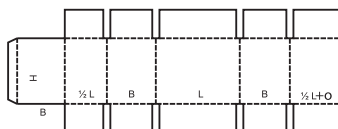
0226



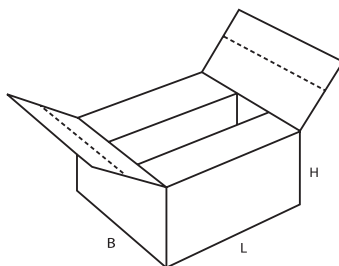
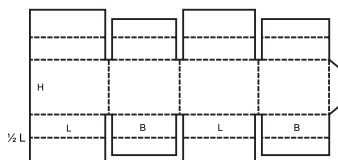
0227



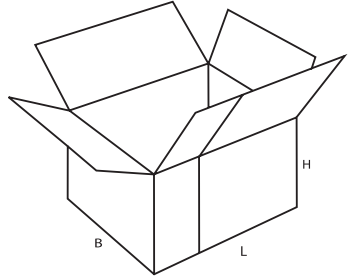
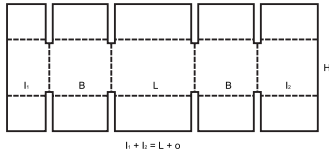
0228



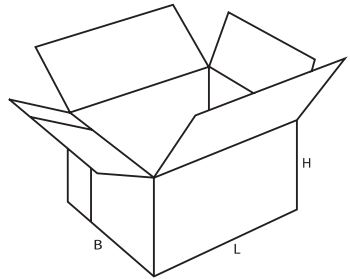
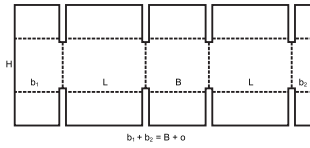
0229



0230



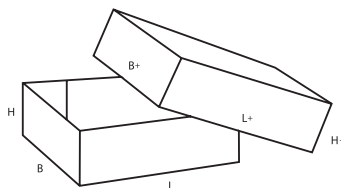
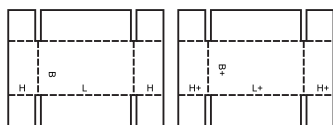
0231



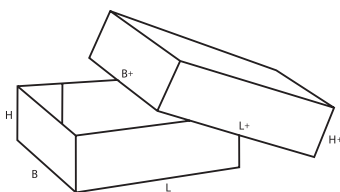
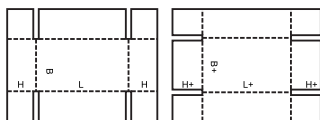
0300

- ▲ **Pudła teleskopowe** składają się z więcej niż jednej części i charakteryzuje je istnienie wieka i/lub spodu, które zachodzą teleskopowo na siebie.

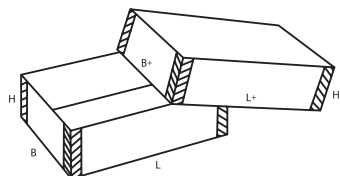
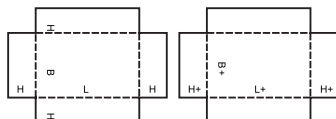
0300



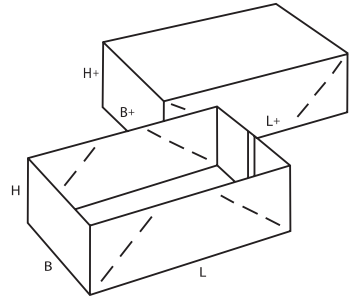
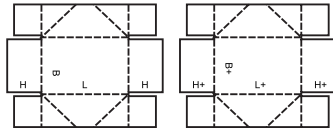
0301



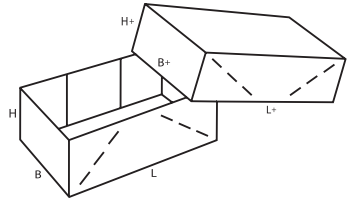
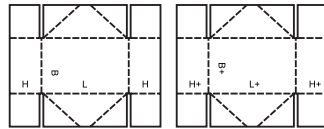
0302



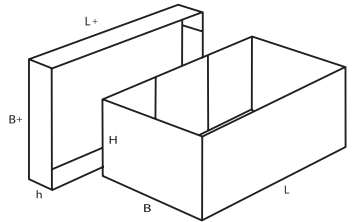
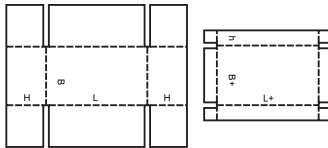
0303



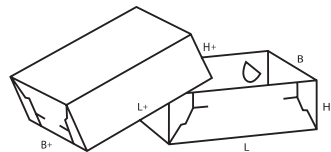
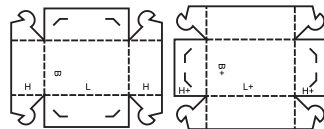
0304



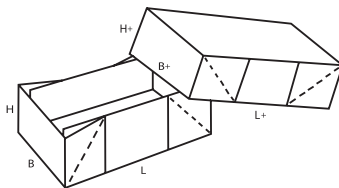
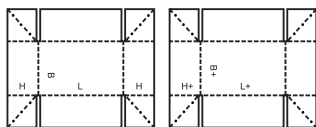
0306



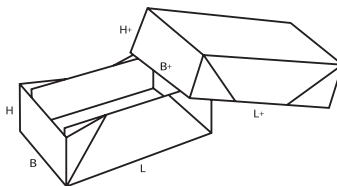
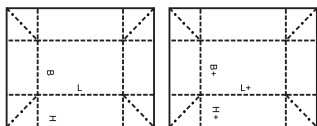
0307



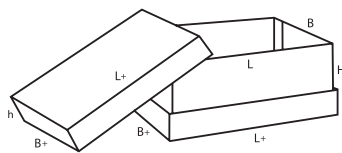
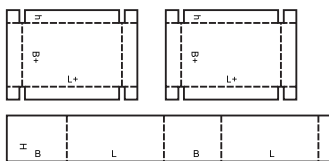
0308



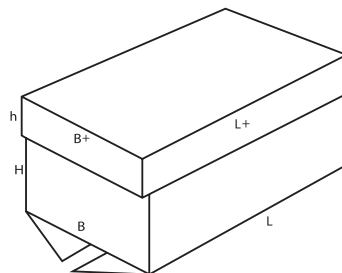
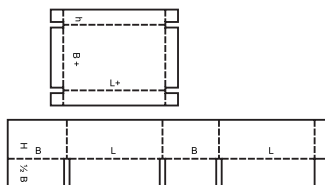
0309



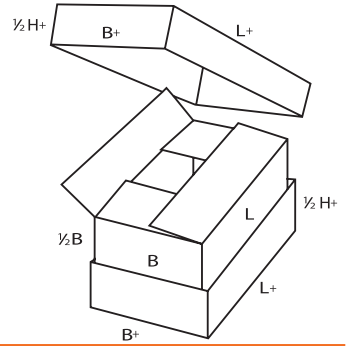
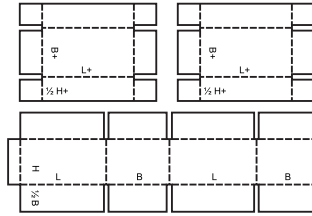
0310



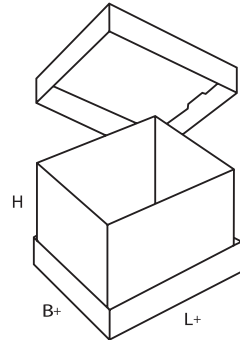
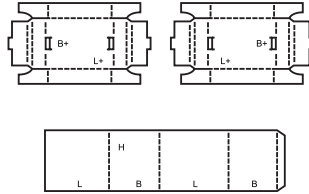
0312



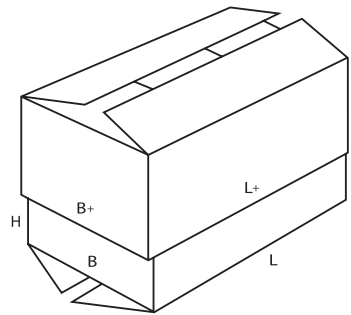
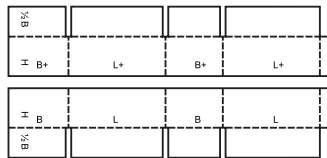
0313



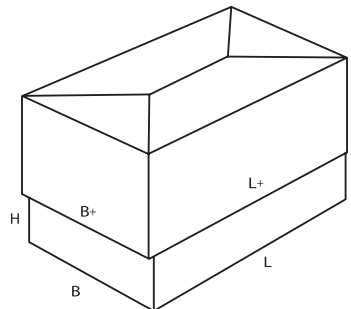
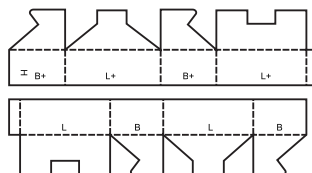
0314



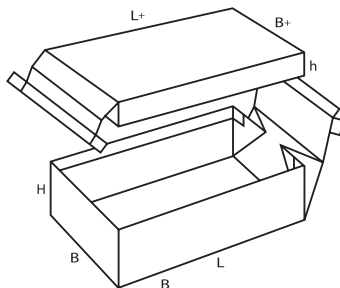
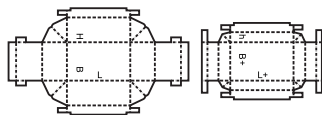
0320



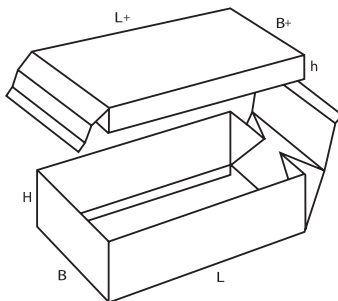
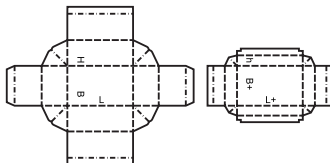
0321



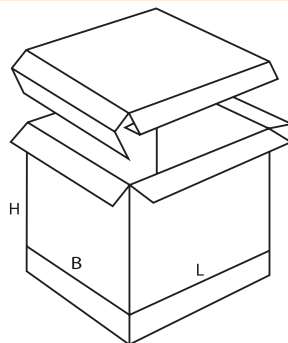
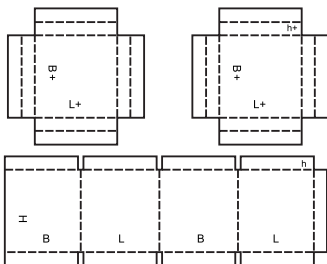
0322



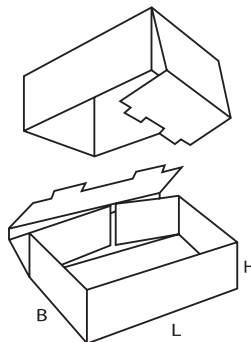
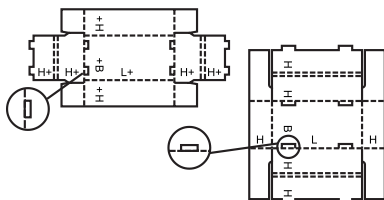
0323



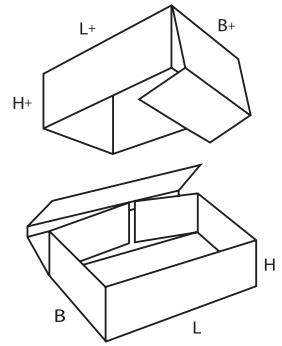
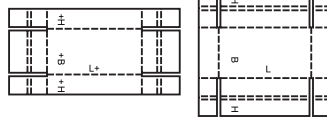
0325



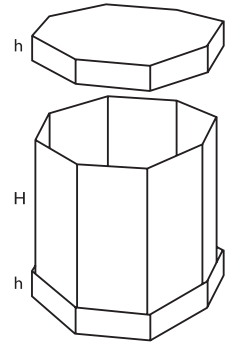
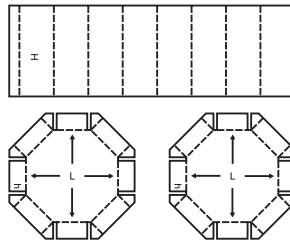
0330



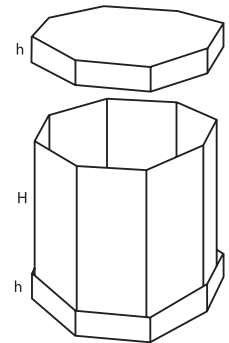
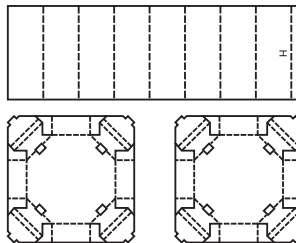
0331



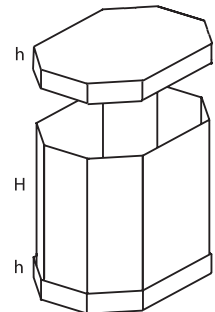
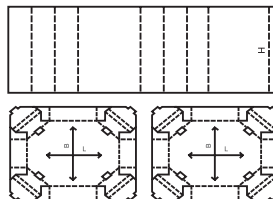
0350



0351



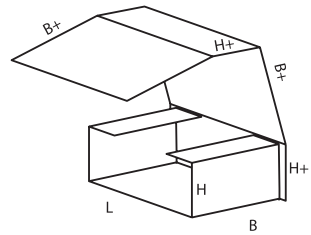
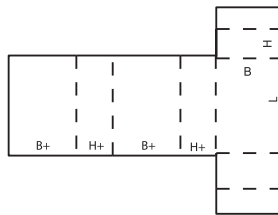
0352



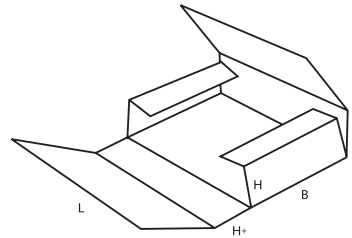
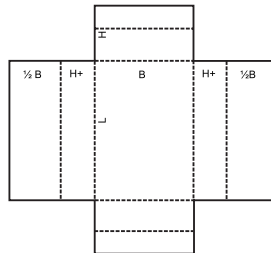
0400

- ▲ **Pudła składane i tace** zwykle składają się tylko z jednego formatu. Dno pudła składa się tak, by utworzyć dwie lub więcej ścian bocznych oraz pokrywę. W niektórych wzorach mogą się pojawiać zamknięcia, uchwyty, okienka itd.

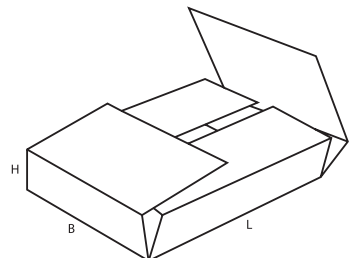
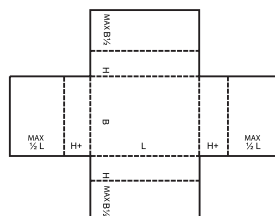
0400



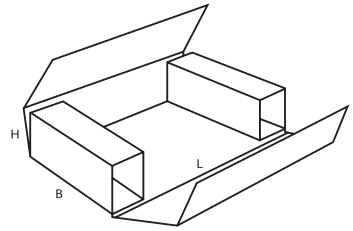
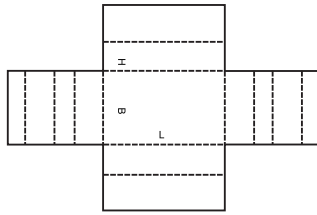
0401



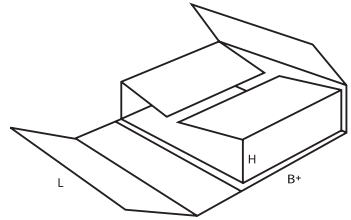
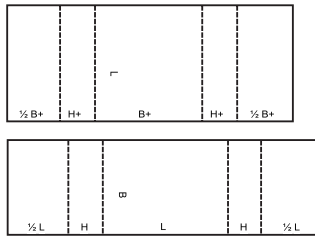
0402



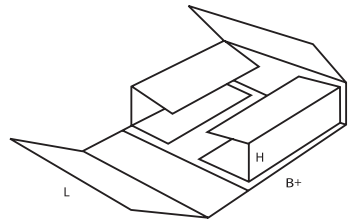
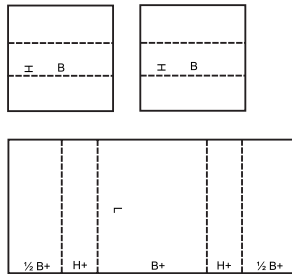
0403



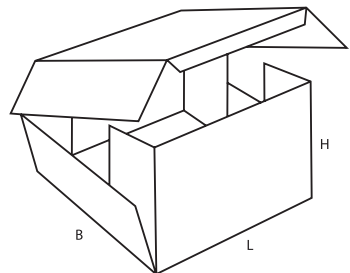
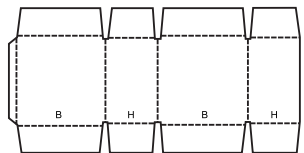
0404



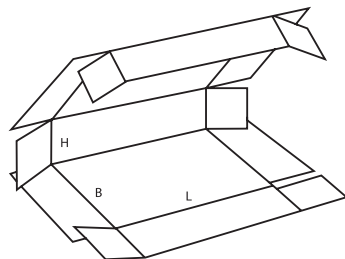
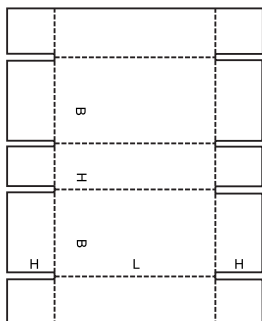
0405



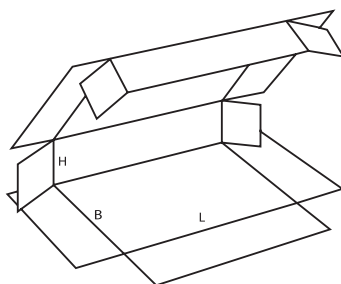
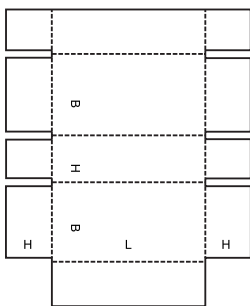
0406



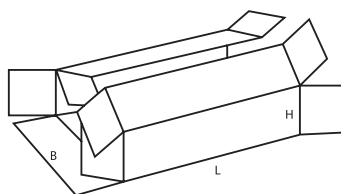
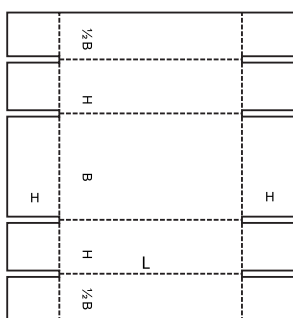
0409



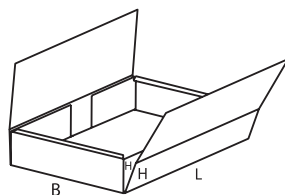
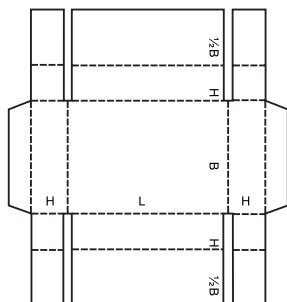
0410



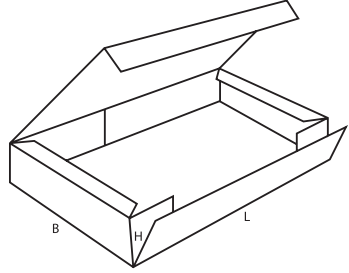
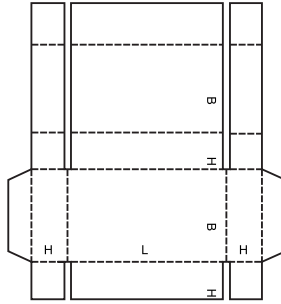
0411



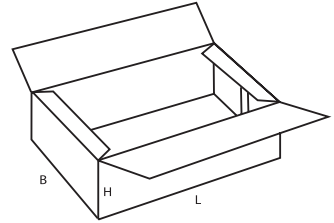
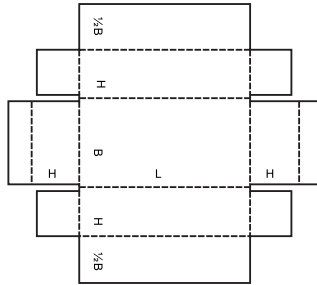
0412



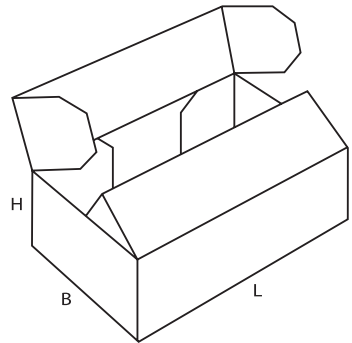
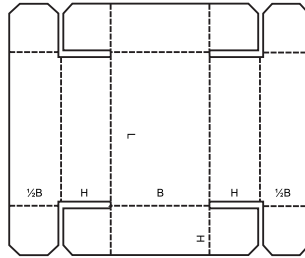
0413



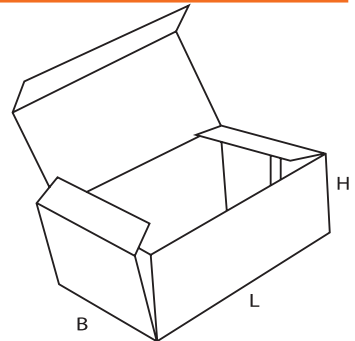
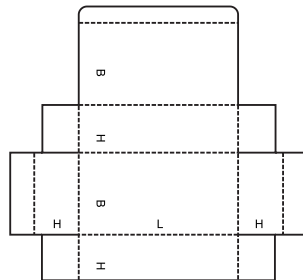
0415



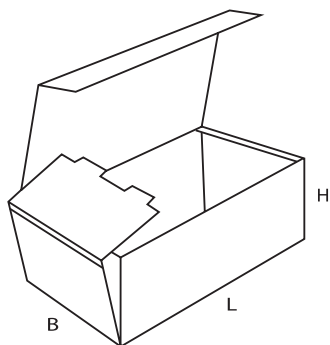
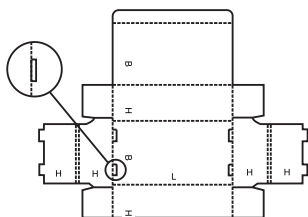
0416



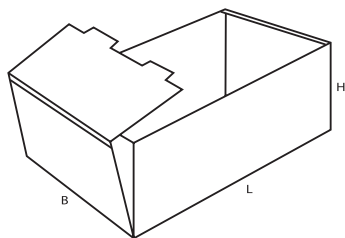
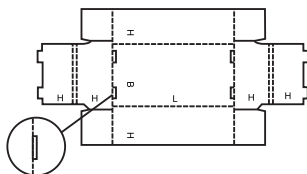
0420



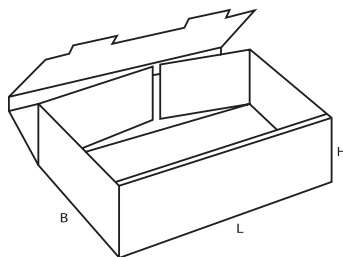
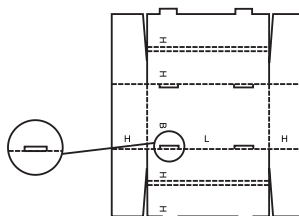
0421



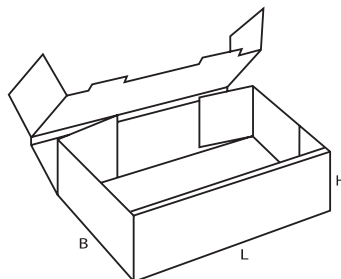
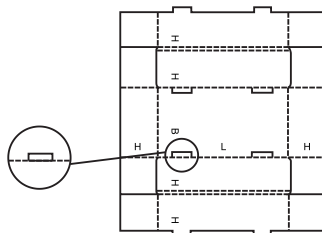
0422



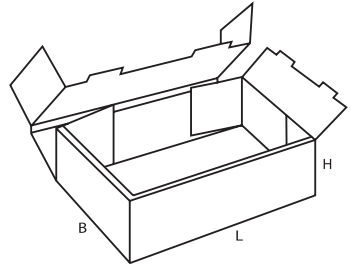
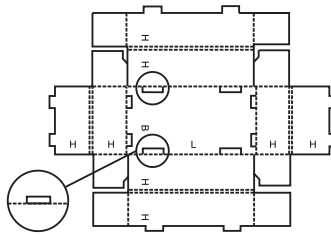
0423



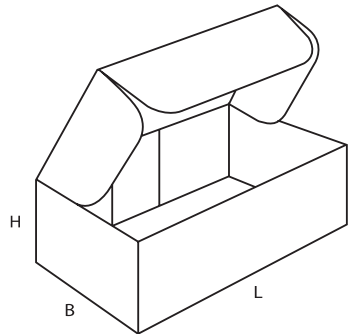
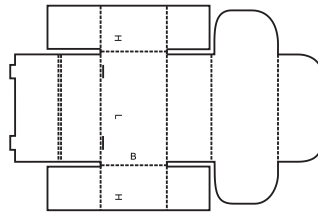
0424



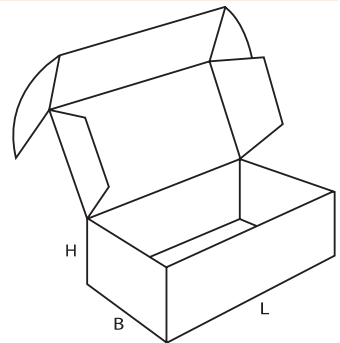
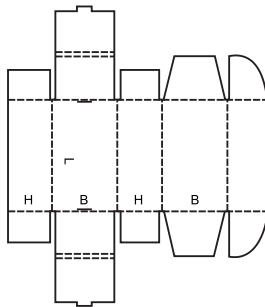
0425



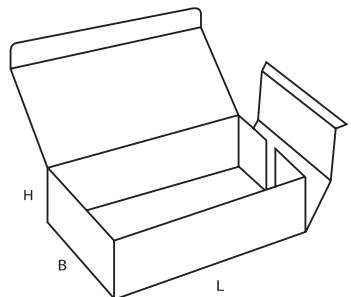
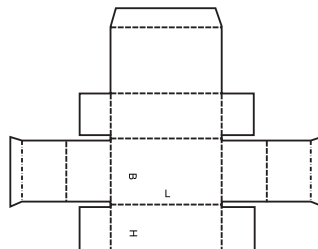
0426



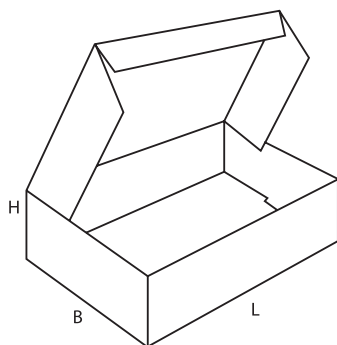
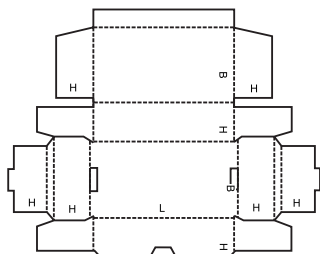
0427



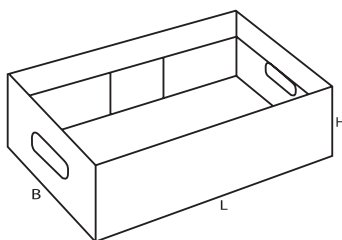
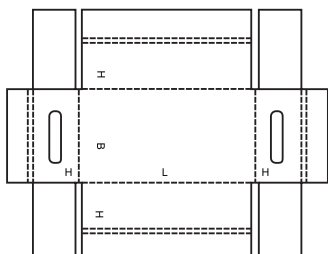
0428



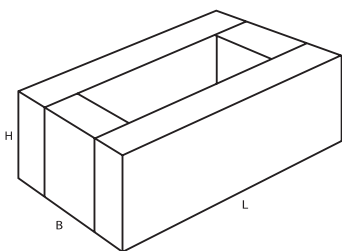
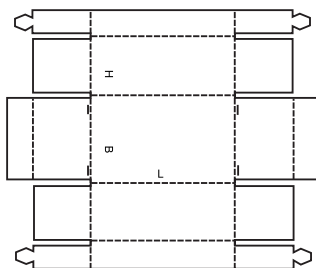
0429



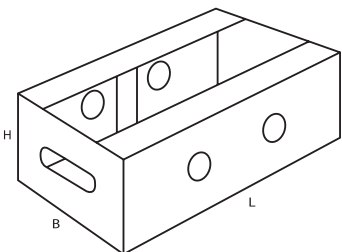
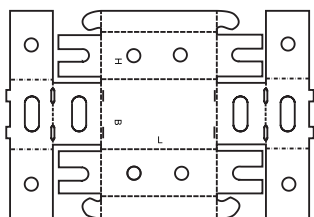
0430



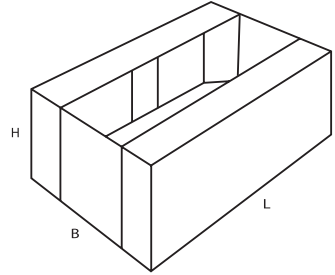
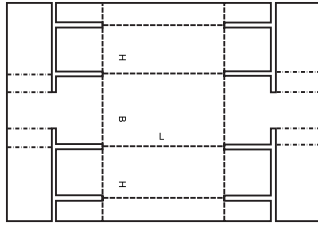
0431



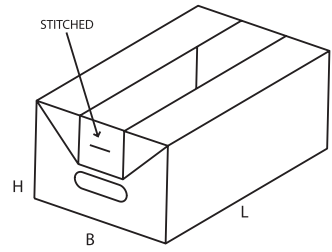
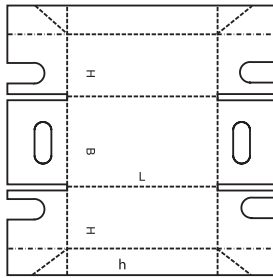
0432



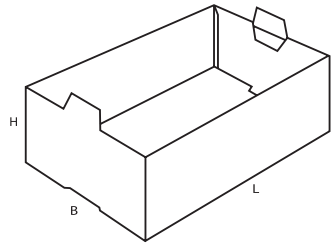
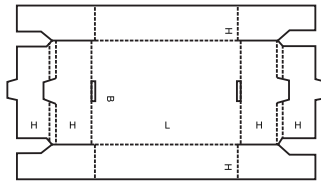
0433



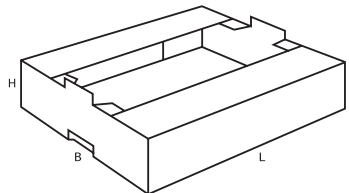
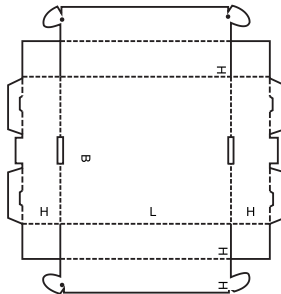
0434



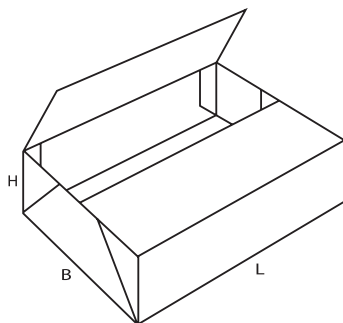
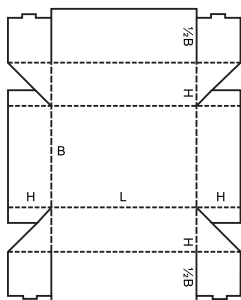
0435



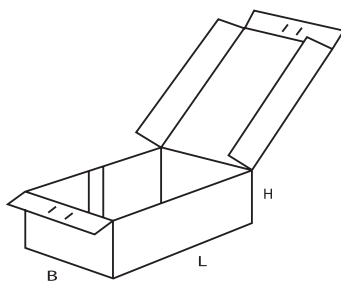
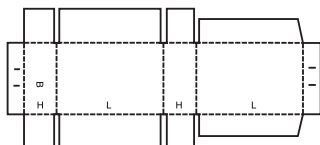
0436



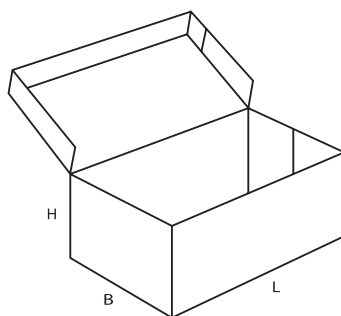
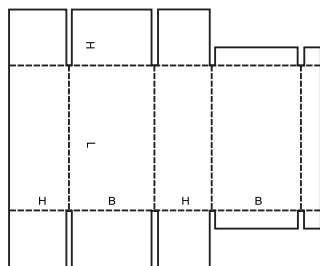
0437



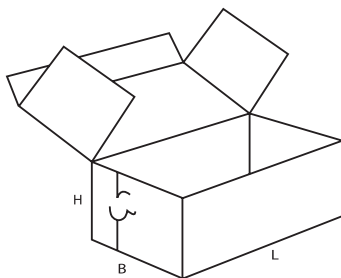
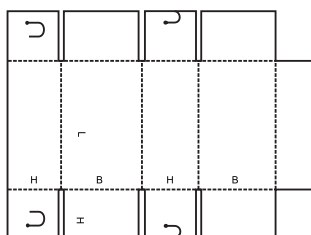
0440



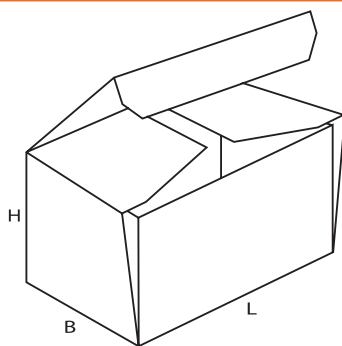
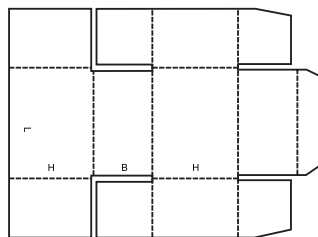
0441



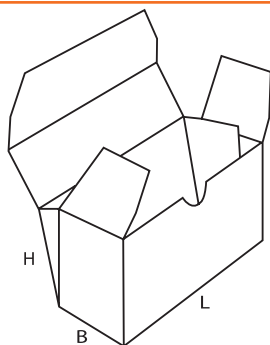
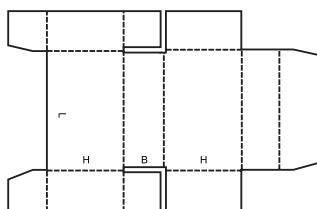
0442



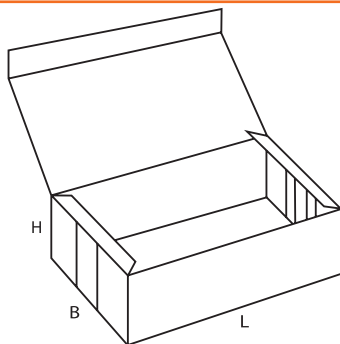
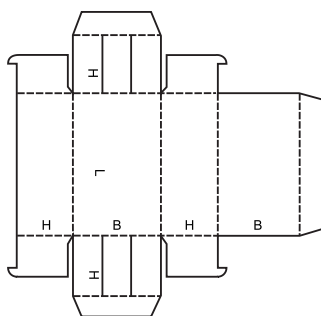
0443



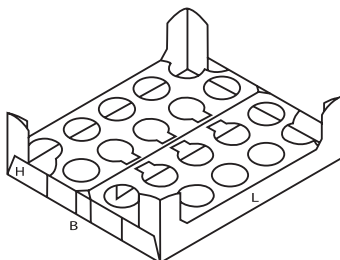
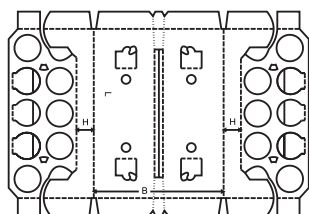
0444



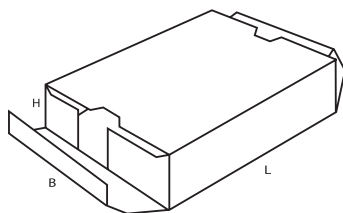
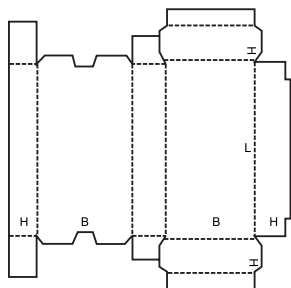
0445



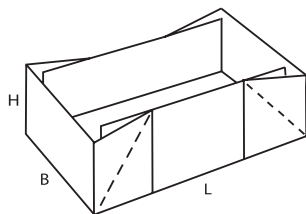
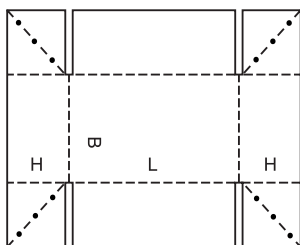
0446



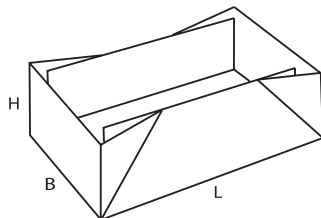
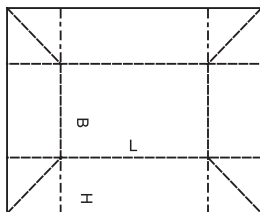
0447



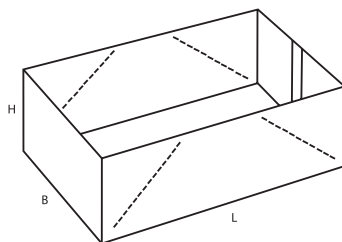
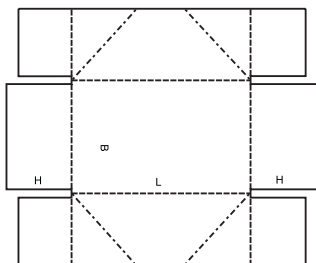
0448



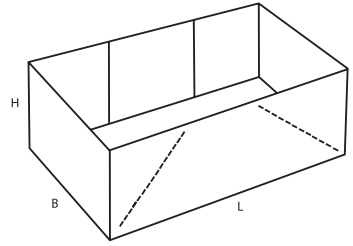
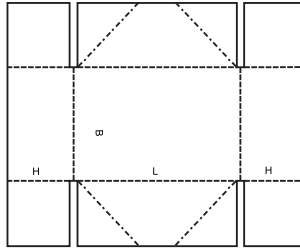
0449



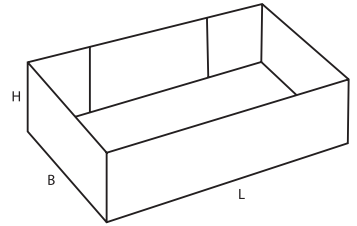
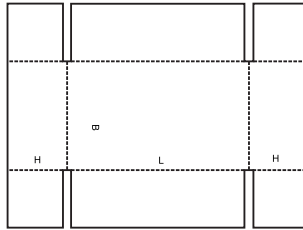
0450



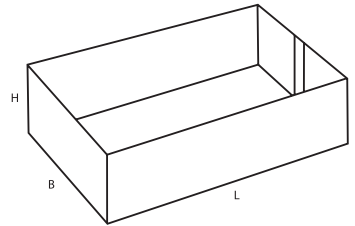
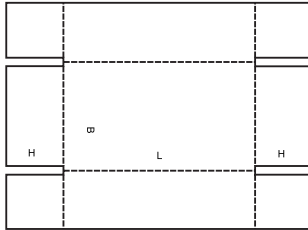
0451



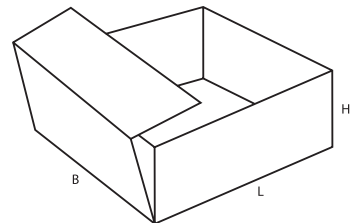
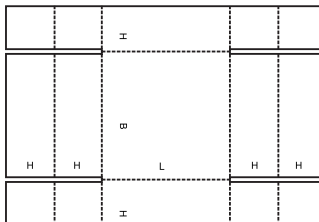
0452



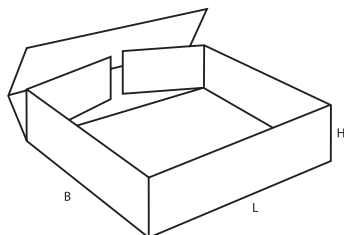
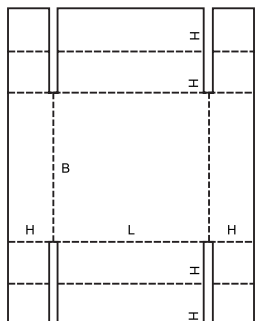
0453



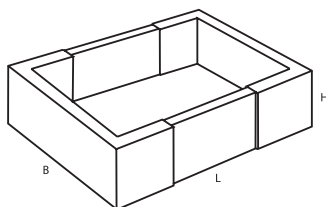
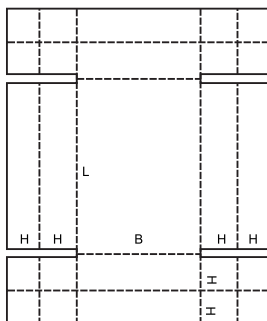
0454



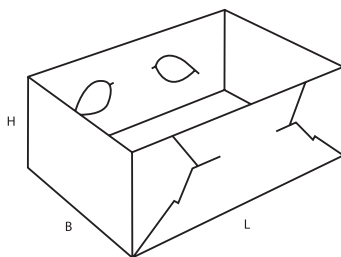
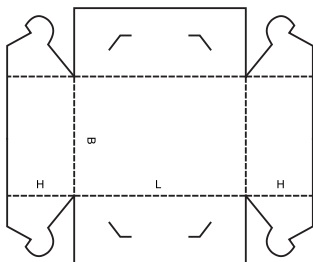
0455



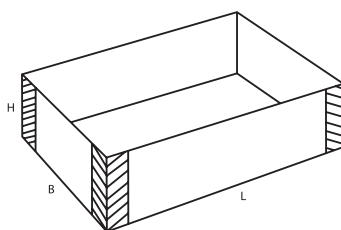
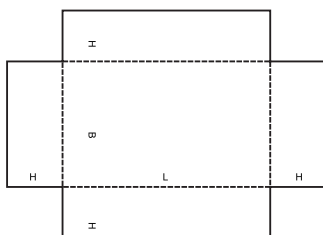
0456



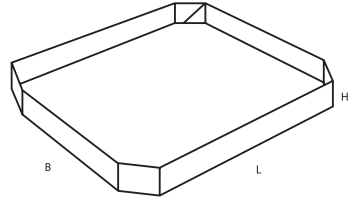
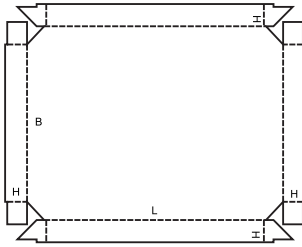
0457



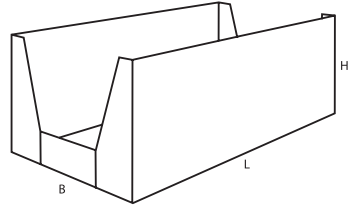
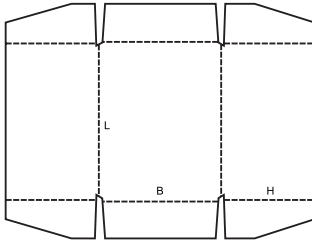
0458



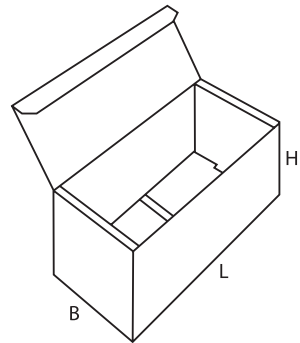
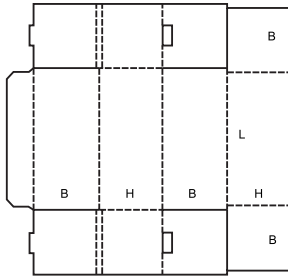
0459



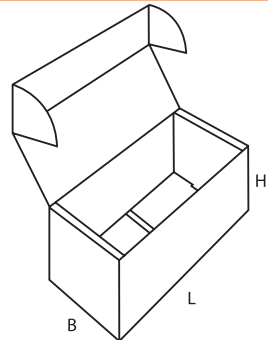
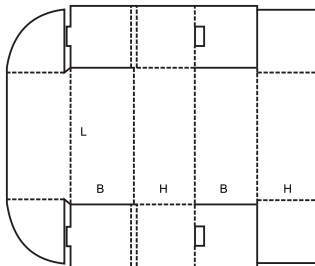
0460



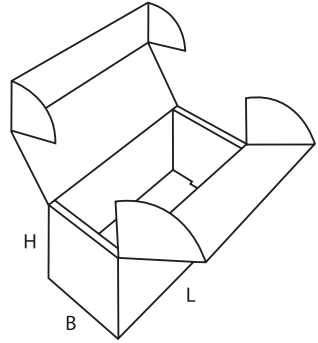
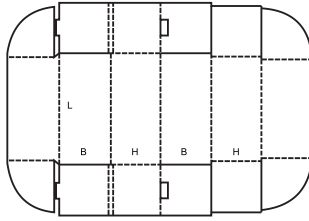
0470



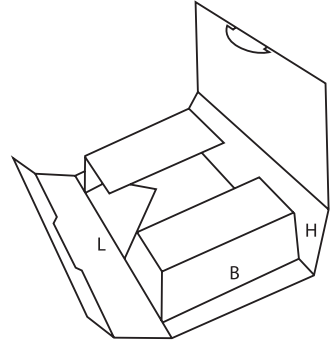
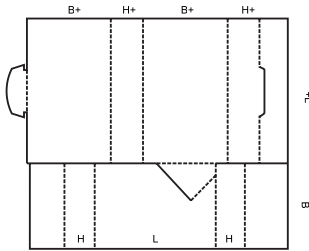
0471



0472



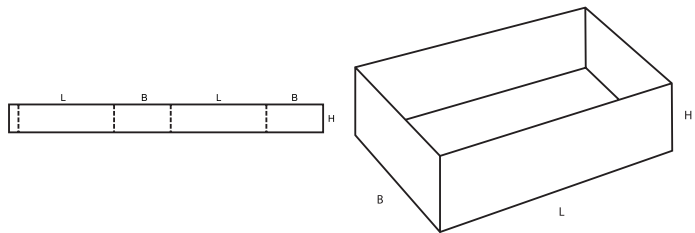
0473



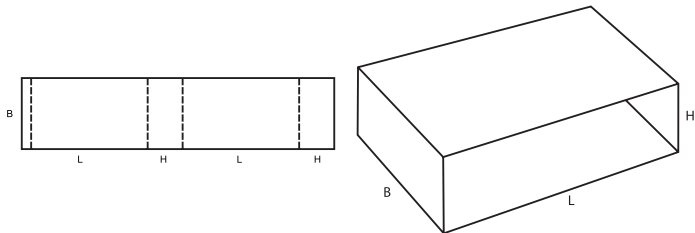
0500

▲ **Pudła wsuwane** składają się z większej ilości części (wewnętrznych oraz obwolut), które można w różnych kierunkach wsuwać jedno w drugie. Grupa ta obejmuje także obwoluty dla innych pudeł.

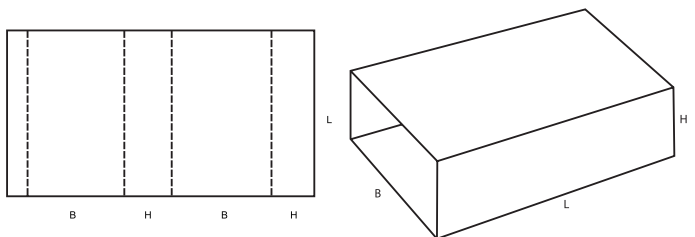
0501



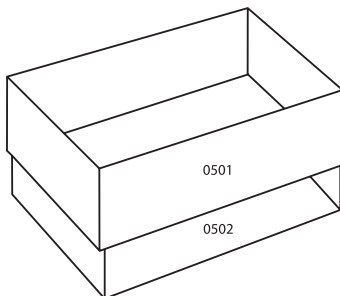
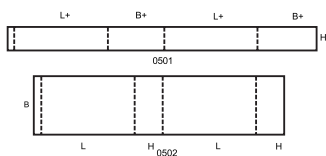
0502



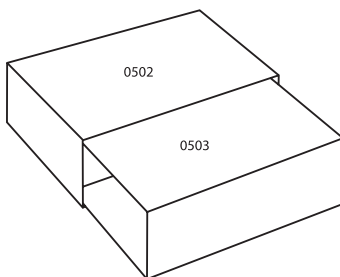
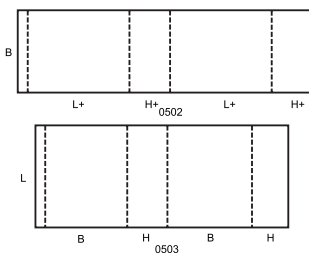
0503



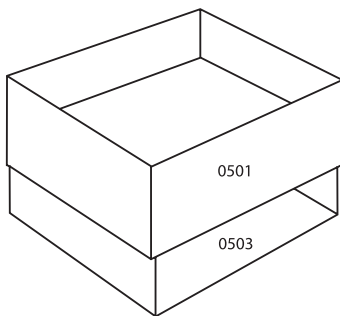
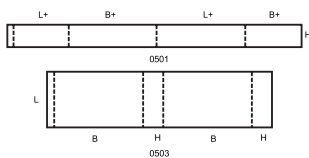
0504



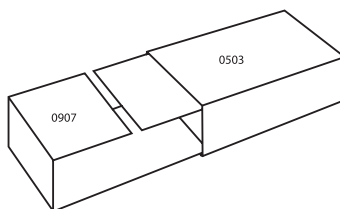
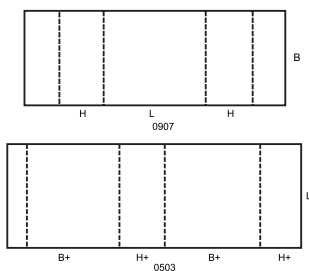
0505



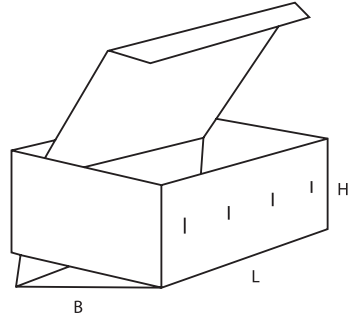
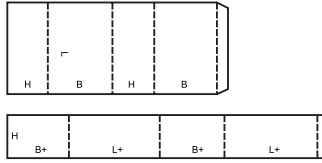
0507



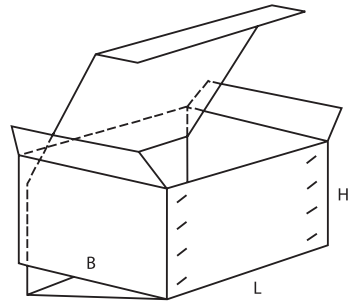
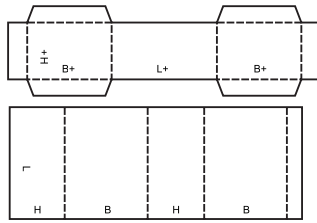
0509



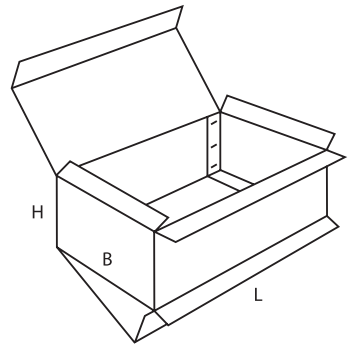
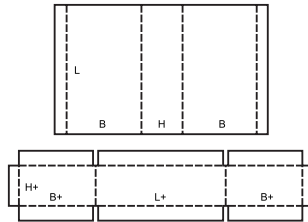
0510



0511



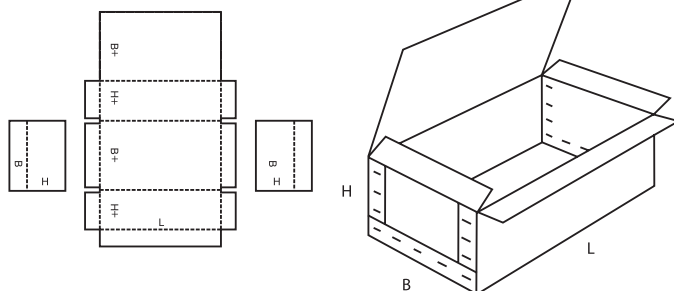
0512



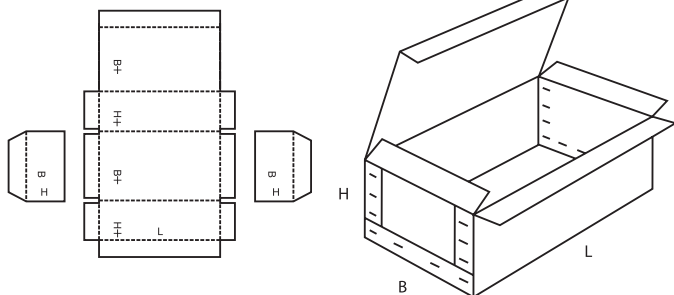
0600

- ▲ **Pudełka trwale łączone** składają się z dwóch oddzielnych części końcowych oraz korpusu i wymagają, przed ich użyciem, zszycia albo podobnej operacji.

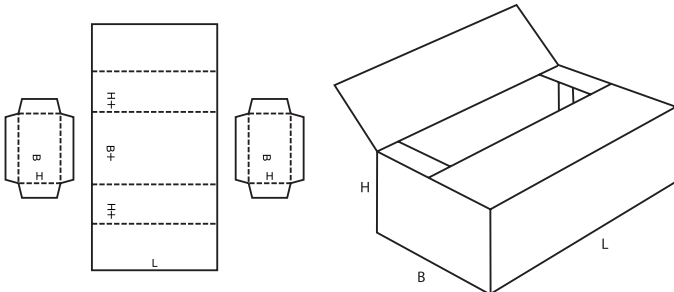
0601



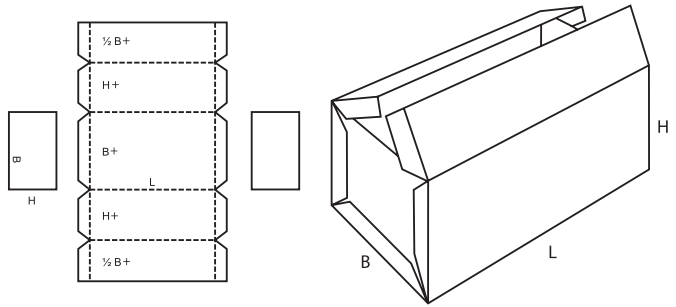
0602



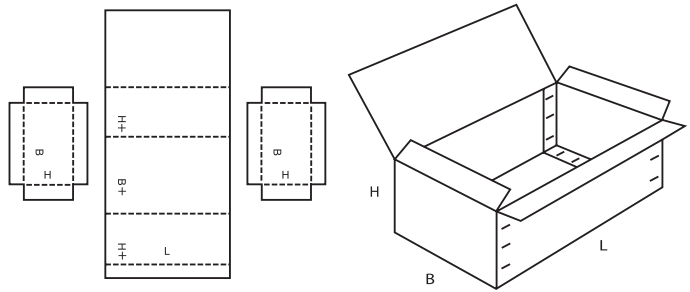
0605



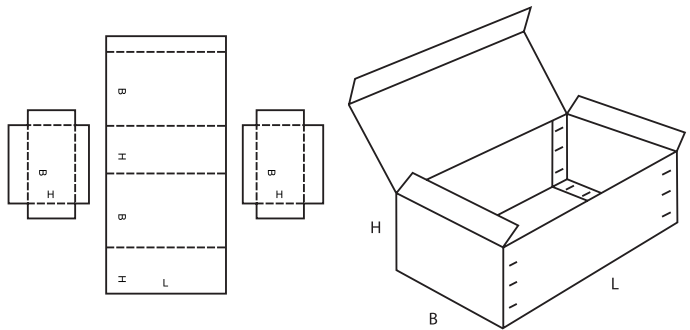
0606



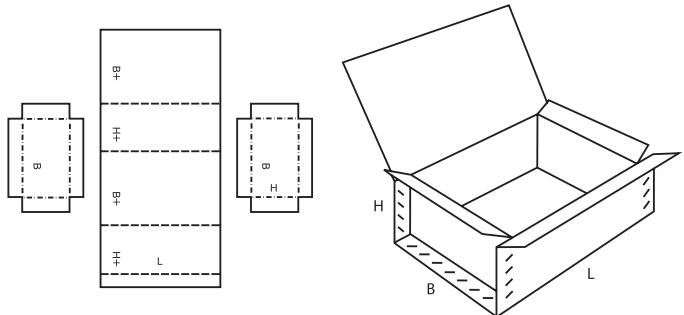
0607



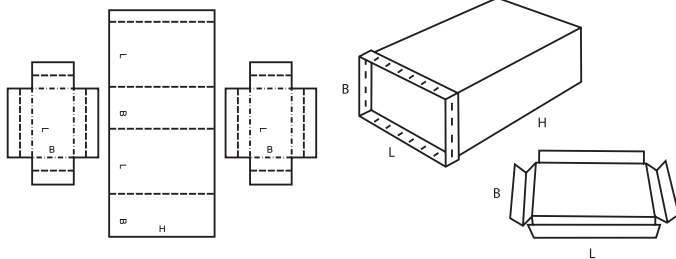
0608



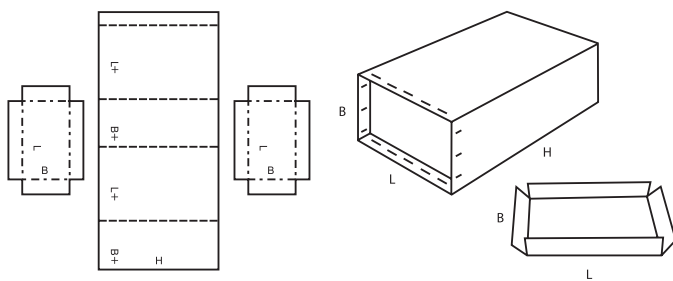
0610



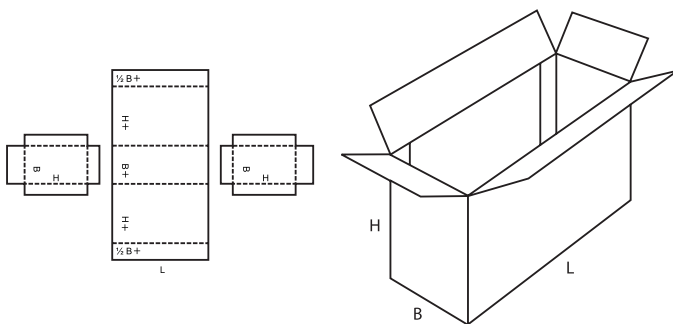
0615



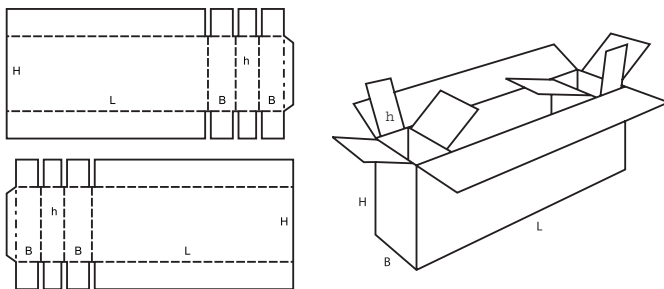
0616



0620



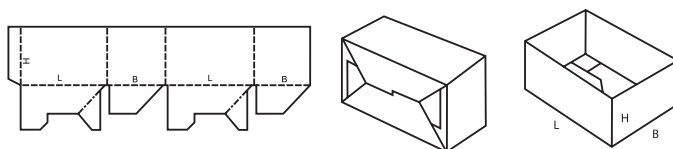
0621



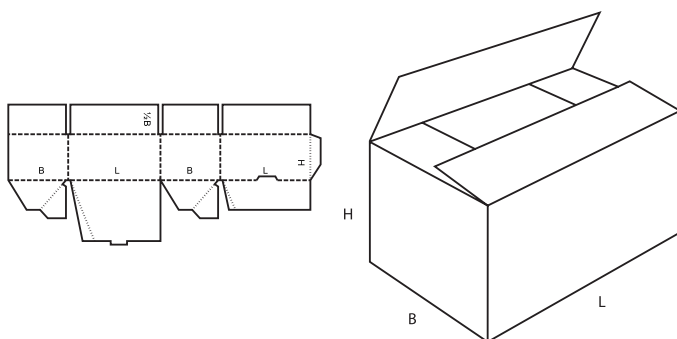
0700

▲ **Pudełka klejone jednoczęściowe** są to pudełka klejone, złożone zwykle z jednej części, dostarczane w stanie złożonym i gotowe do użycia po ich prostym rozłożeniu.

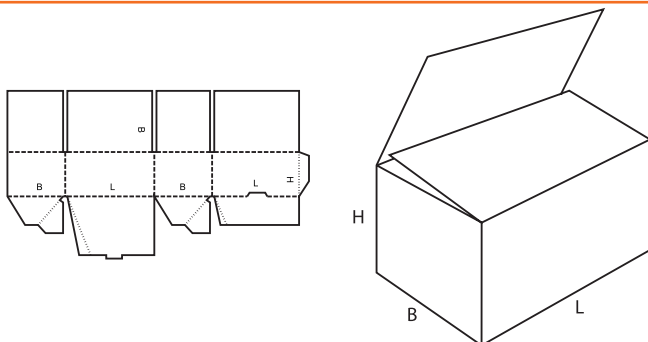
0700



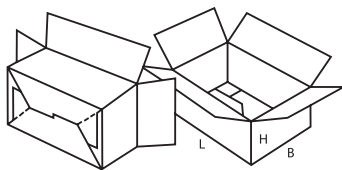
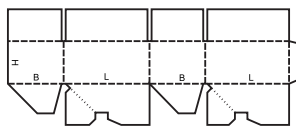
0701



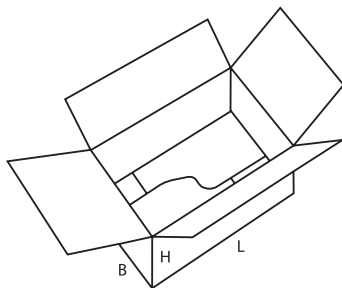
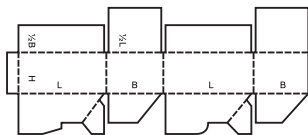
0703



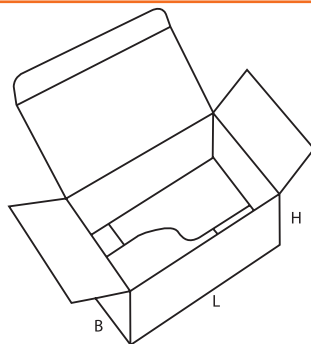
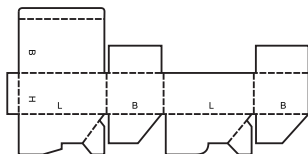
0711



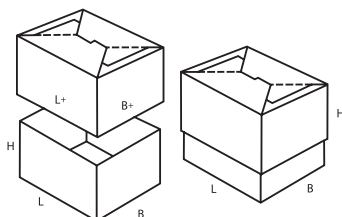
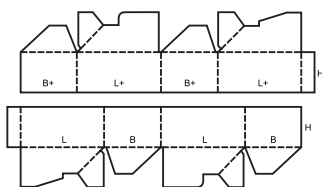
0712



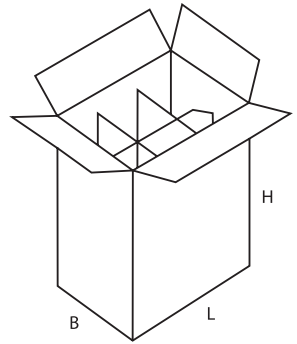
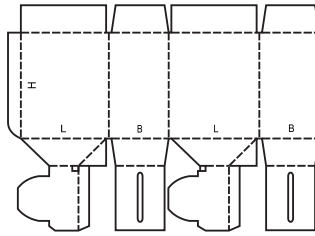
0713



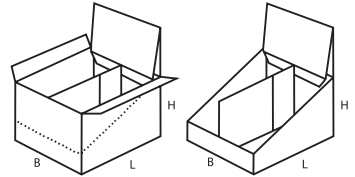
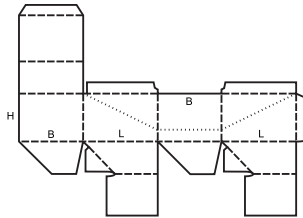
0714



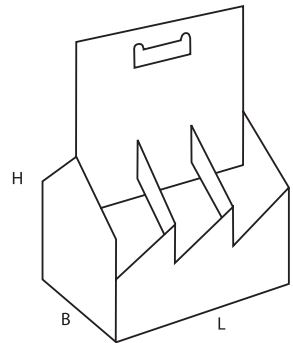
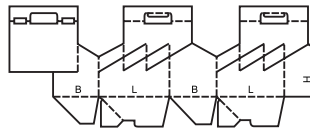
0715



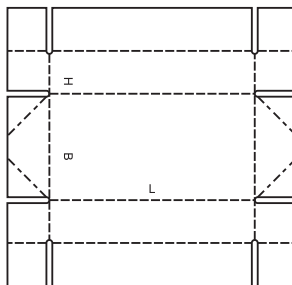
0716



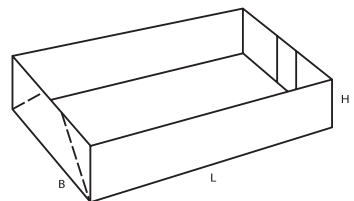
0717



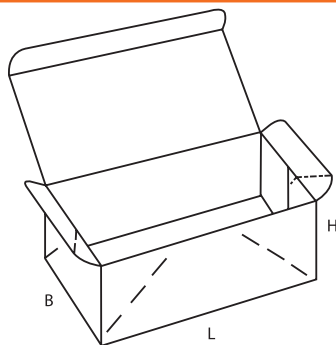
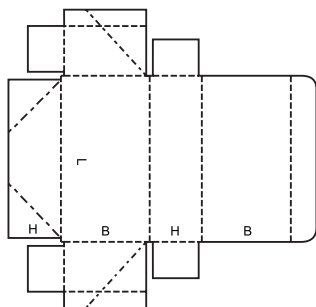
0718



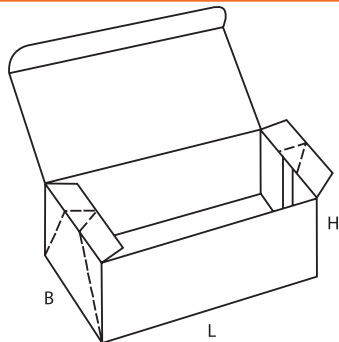
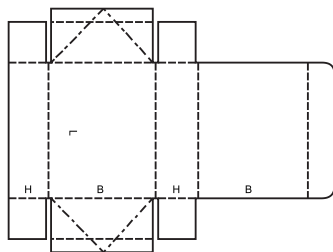
$B \geq 2H$



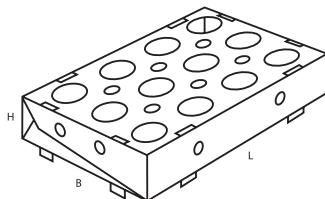
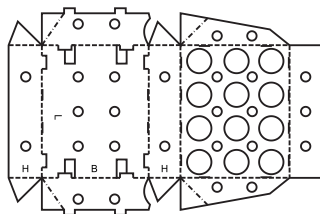
0747



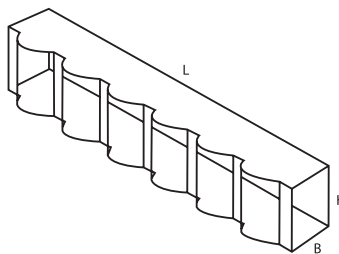
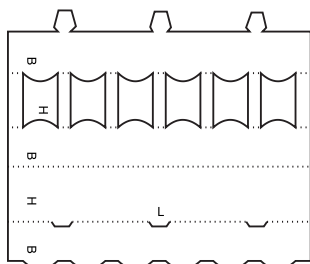
0748



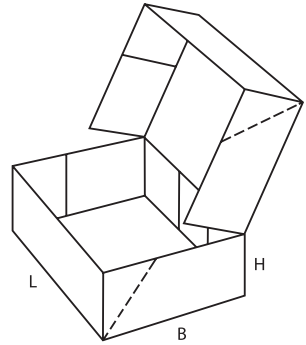
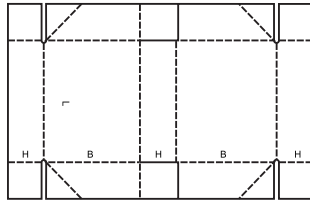
0751



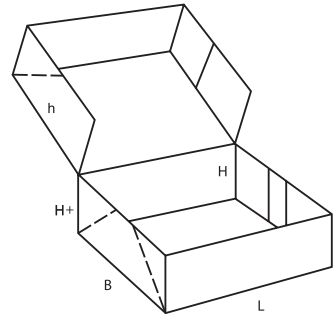
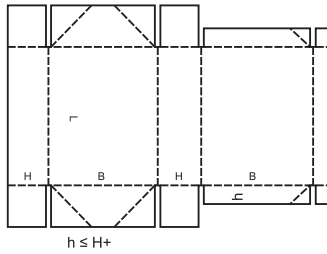
0752



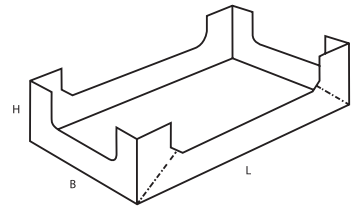
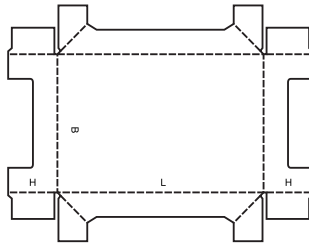
0759



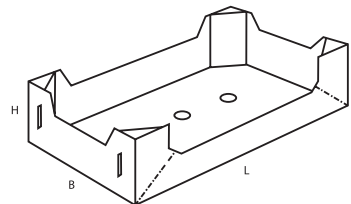
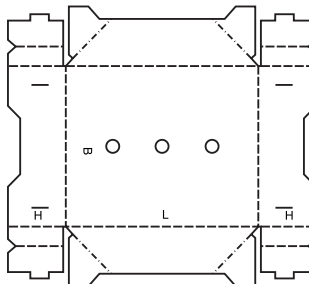
0761



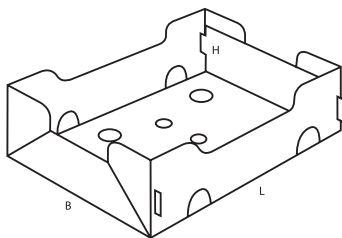
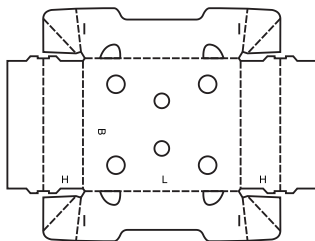
0770



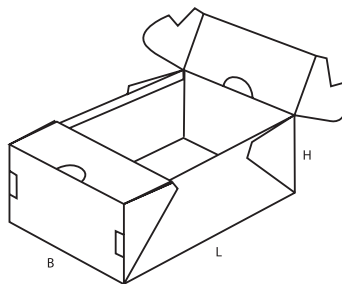
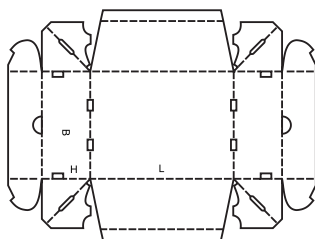
0771



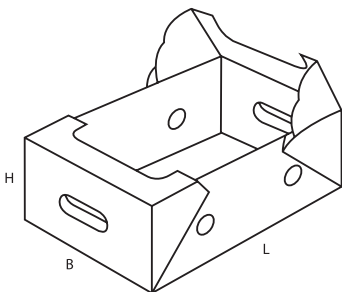
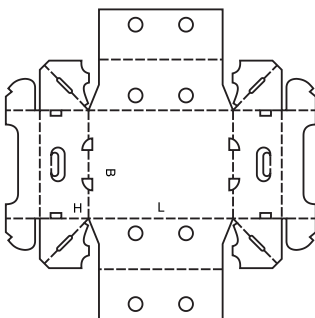
0772



0773



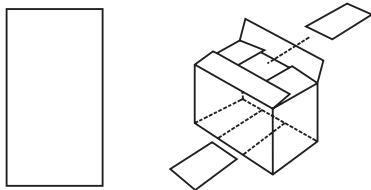
0774



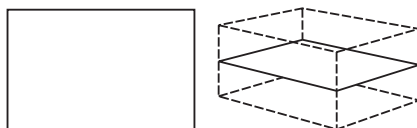
0900

- ▲ **Wyposażenie wewnętrzne** pudeł, takie jak wkładki, przekładki, kratownice, wkładki wypełniające itd, stanowiące elementy związane z konstrukcją pudła albo osobne. Wskazana ilość elementów jest dowolna i może być, stosownie od wymagań, zwiększana lub zmniejszana.

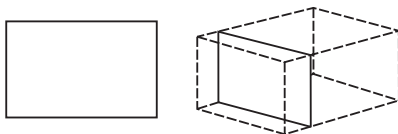
0900



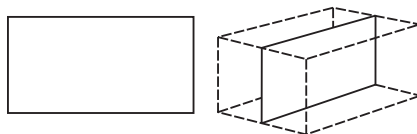
0901



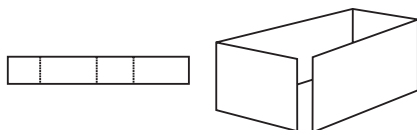
0902



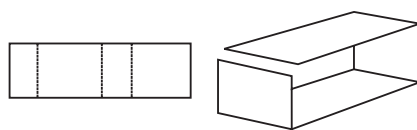
0903



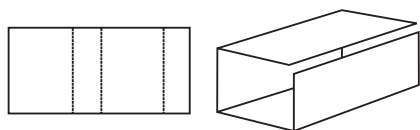
0904



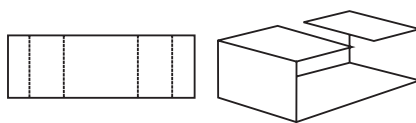
0905



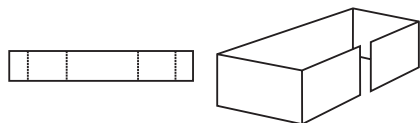
0906



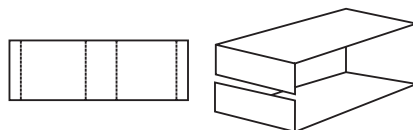
0907



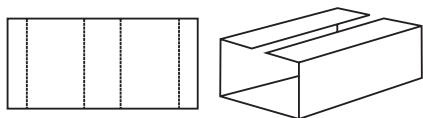
0908



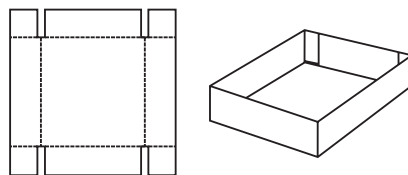
0909



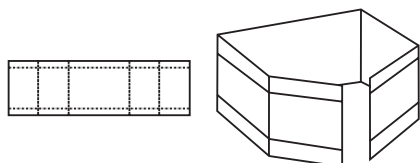
0910



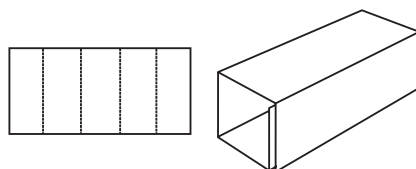
0911



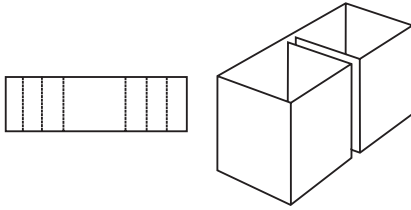
0913



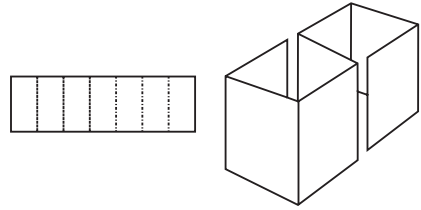
0914



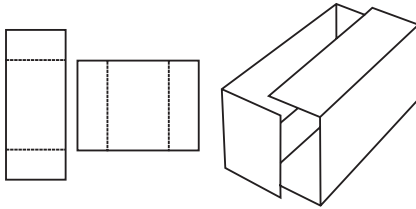
0920



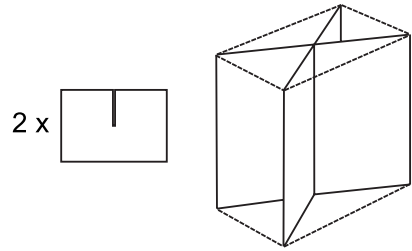
0921



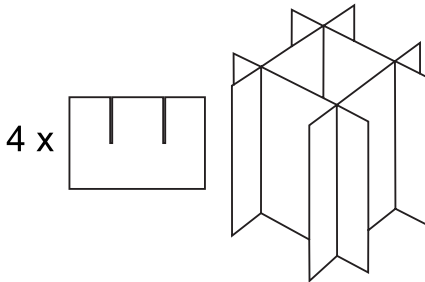
0929



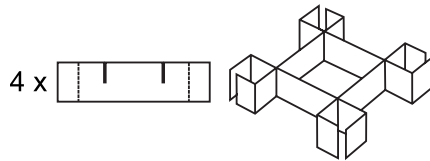
0930



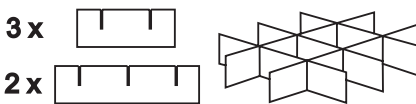
0931



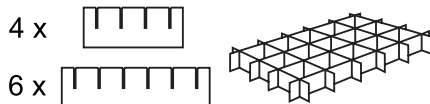
0932



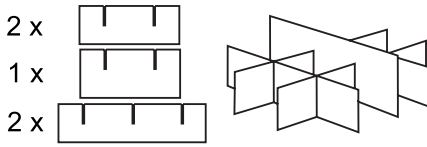
0933



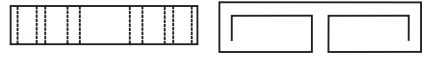
0934



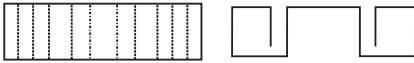
0935



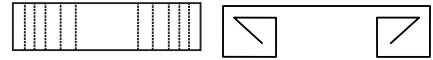
0940



0941



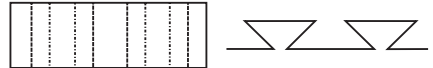
0942



0943



0944



0945



0946



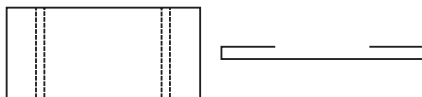
0947



0948



0949



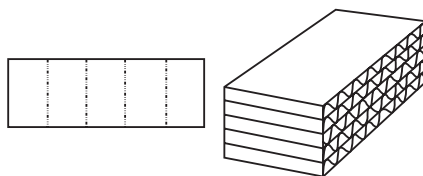
0950



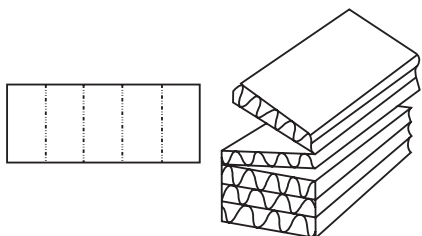
0951



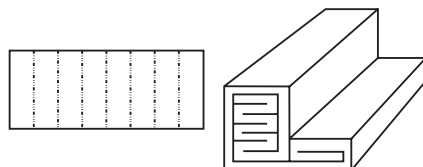
0965



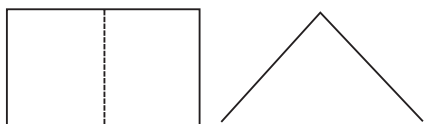
0966



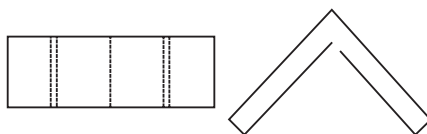
0967



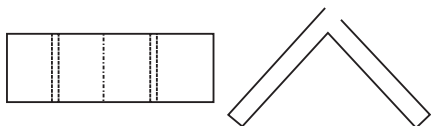
0970



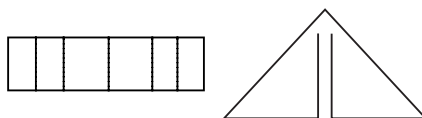
0971



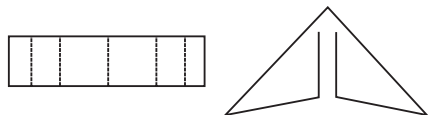
0972



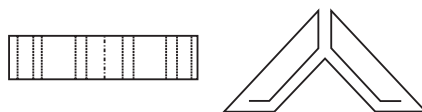
0973



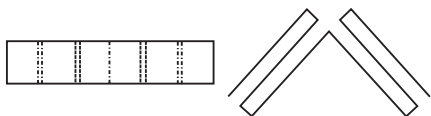
0974

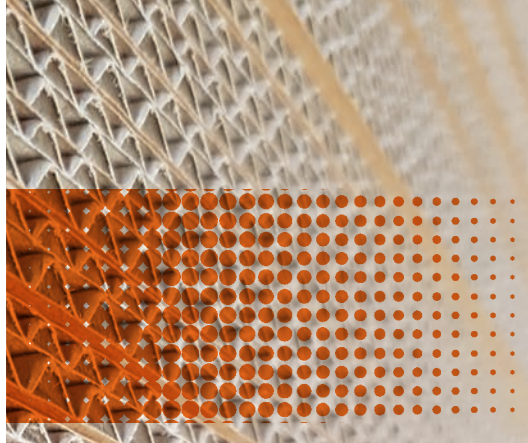


0975



0976





PRINT PACK GROUP

PRINT PACK Group Sp. z o. o.

Kamień, ul. Radomska 2

26-800 Białobrzegi

+48 48 613 24 34

sprzedaz@print-pack.pl

www.print-pack.pl



Znak odpowiedzialnej
gospodarki leśnej